

## DECORATIVE PINTUCKS

### Beautiful pintucks for all occasions!

Looking great on store-bought things: Parallel rows of small »tucks«, evenly spaced – giving garments and home decors an elegant touch. It's no big deal to sew these pretty pintucks yourself! Thanks to clever SINGER® accessories for pintucking you can easily create gorgeous pintuck effects for exquisite blouses, festive table linen, or small gifts for everybody's taste.

We show you the easy way to beautiful pintucks with step-by-step instructions for preparation and sewing process, including materials required. Rediscover classic embellishment techniques that are so trendy today, with the help of your sewing machine.



The secret of pintucking:

### THE PINTUCK FOOT

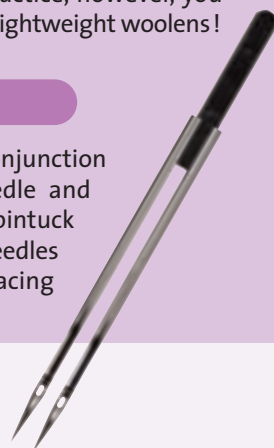
The pintuck foot automatically creates small »tucks« in the fabric. Thanks to seven parallel grooves on the foot's underside multiple rows of tucks can be sewn closely and evenly spaced. Best suitable fabrics for this special technique are all fine, firmer-type materials like cotton, fine linen, silk or taffeta. With a little practice, however, you can also work with viscose, chiffon or lightweight woolsens!

### THE TWIN NEEDLE

The pintuck foot only works in conjunction with a twin needle. The twin needle and appropriate thread tension help the pintuck foot create the small »tucks«. Twin needles are available in different needle spacing widths.

### Materials Required:

- > Fine fabrics  
e.g. cotton, fine linen, silk or taffeta
- > Two thread spools (same color)
- > SINGER® pintuck foot
- > SINGER® twin needle 130/705 H-ZWI No. 2028 – 2 mm needle spacing, size 80
- > Fabric-marking pen



## 1 Preparing the Sewing Machine:

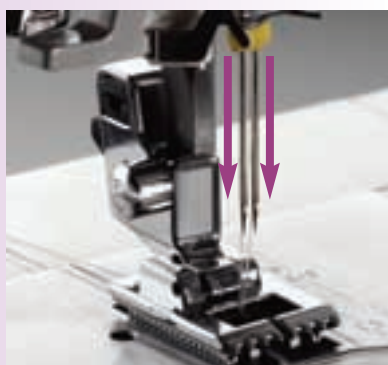
### Stitch program:

Select a straight stitch, stitch length: 2-2.5 mm

- 1 | Attach the pintuck foot and insert a twin needle.

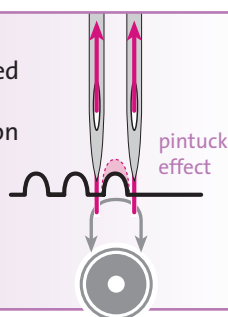


- 2 | Thread the two needle threads. For the second thread spool you need the additional spool pin from the sewing machine's accessories. Simply pin it on. For threading follow the machine's thread path with both threads. Pull the right thread into the right needle's eye and the left thread into the left needle's eye.



! **Note:** If your machine is equipped with an automatic needle threader, don't use it for threading a twin needle. It has to be done manually!

- 3 | Depending on the fabric type the upper thread tension has to be increased to get a pronounced pintuck effect. We recommend to sew a test pintuck on a piece of scrap fabric.



! **Tip!** The firmer and heavier the fabric, the higher the upper thread tension!

## 2 Let's Start Sewing:

! **Tip!** For your first pintuck draw a line on the fabric using a fabric-marking pen.



- 4 | Sew your first pintuck. For smooth results, gently pull the fabric taut while sewing.



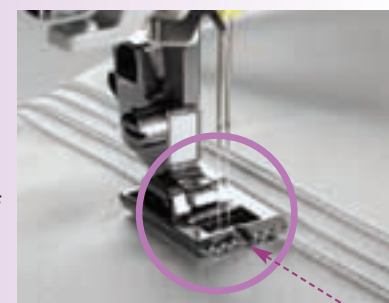
- 5 | For closely spaced pintucks:

For sewing a second, parallel row of tucks, place the first row in the foot's groove next to it. This way the first pintuck serves as a guide for the next row. The grooves also help keep multiple rows of tucks spaced evenly.



- For wider-spaced pintucks:

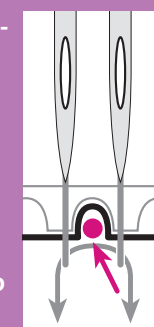
You can easily determine spaces between several rows of tucks simply by choosing different grooves of the foot. It's important, however, that one finished row of tucks always runs parallel in one of the grooves as a guide.



- Finishing the pintucks:

Pull the thread ends to the back of the fabric and knot. Press the fabric on the wrong side.

! **Tip!** If you want an even more pronounced pintuck effect, you can add a cord or gimp thread while sewing. Simply lay a cord or gimp thread under the fabric, so that it is centered between the twin needle and in one of the grooves. Hold the cord straight while sewing. It's done in seconds, provides a totally different optical effect and allows the tucks not to be flattened after being sewn.

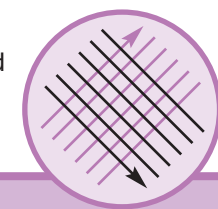


! **Tip!** Using the edge guide for sewing wide-spaced rows of pintucks guarantees parallel feeding and accurate spacing of each row.



### A great eye-catcher!

Beautiful graphic effects can be produced by sewing pintucks criss-cross on top of each other, e.g. like a grid.



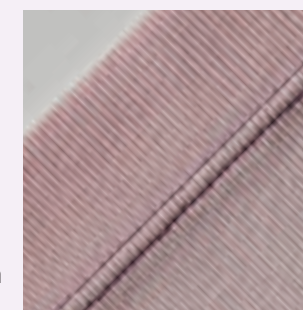
## There's more to twin needles than pintucking!

### ...for example, professional hemming:

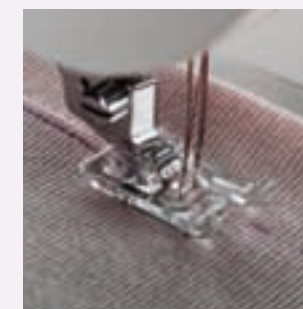
Looks tailor-made! With this seam finishing technique you can simultaneously finish raw fabric edges and sew a hem. For fast, durable and great-looking seams!

You need a twin needle with a needle spacing of 3 or 4 mm.

**Important:** Please use a stretch twin needle (ball point) for stretch materials!



Press and baste a seam in the desired width. Sew up the seam on the right fabric side and make sure that the raw seam edge is centered between the two needles. The basting line serves as marking while sewing. The zigzag stitch on the wrong fabric side finishes the raw fabric edge while a double topstitch effect can be seen on the right fabric side.



## Twin needle embroidery – twice as pretty!



Beautiful decorative effects can be achieved by sewing embroidery stitches with a twin needle.

**Important:** Please refer to the twin needle section of your machine's instruction book for details on how to reduce the stitch width to prevent the twin needle from stitching on the presser foot. (Needle breakage!)

- > Choose a twin needle with a smaller needle spacing (2 or 3 mm).
- > Attach the standard presser foot.
- > Thread the needle using two different thread hues.
- > Select a decorative stitch.

**Remember to check the stitch width as described above!**

! **Tip!** If you are working with fine materials, place stabilizer under the fabric to prevent fabric distortion.