

**#1a
Front
Cut 1 Main Fabric
Cut 1 Lining**

Place on Fold

Grain Line

1/2 inch seam allowance

Attach #1b here

Center

Attach #1a here

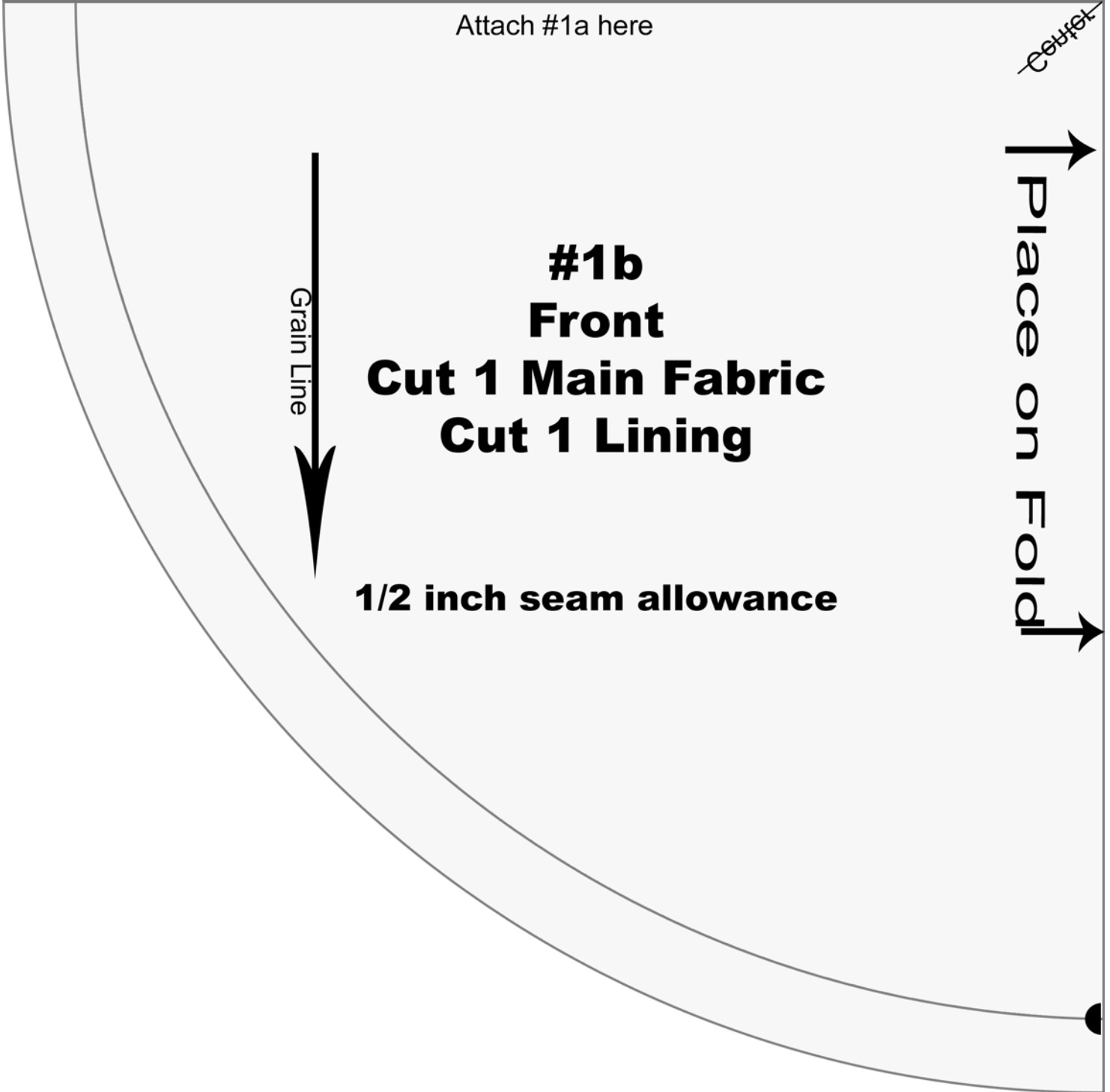
Cut

Place on Fold

Grain Line

#1b
Front
Cut 1 Main Fabric
Cut 1 Lining

1/2 inch seam allowance



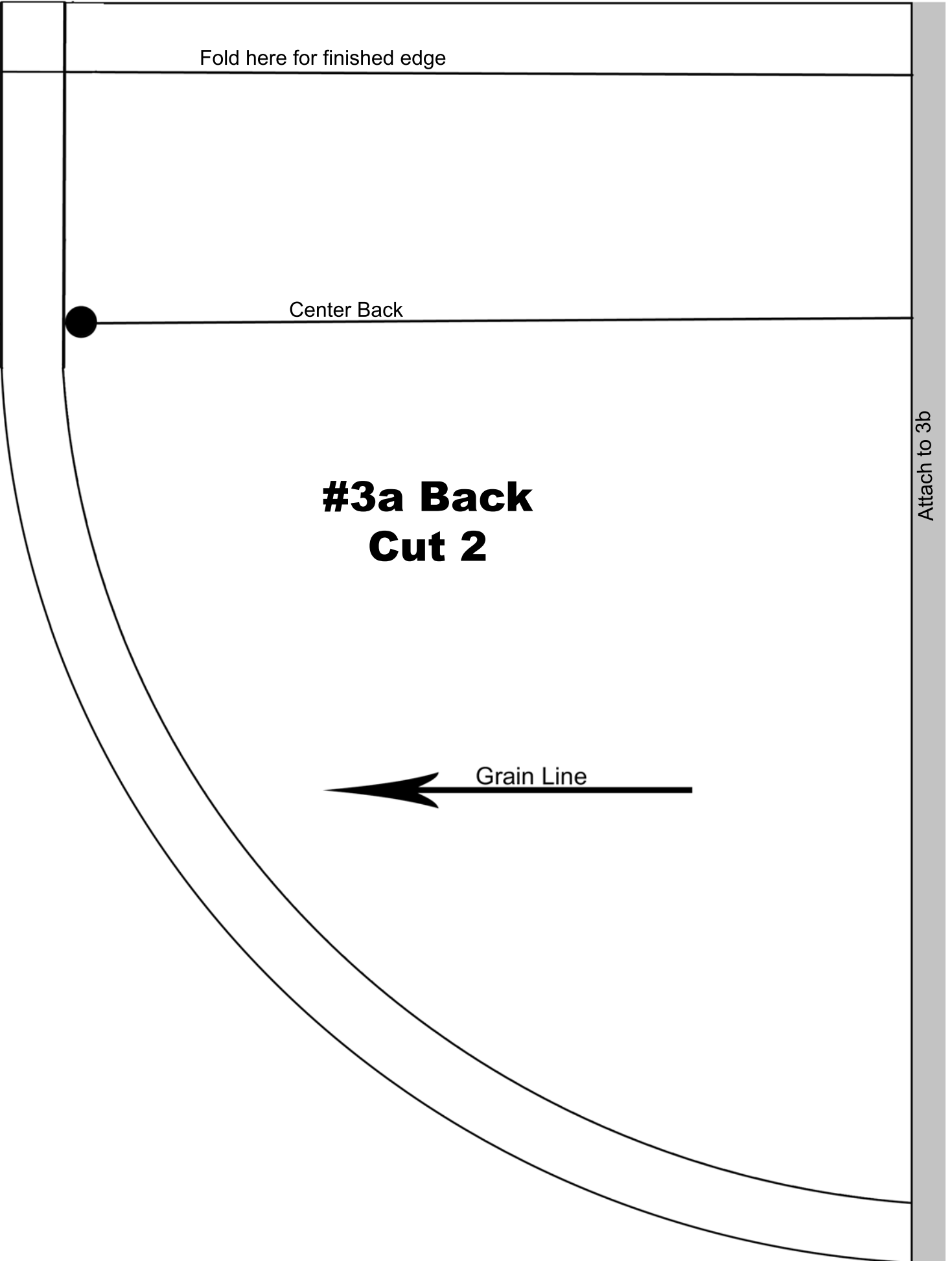
Fold here for finished edge

Center Back

#3a Back Cut 2

Grain Line

Attach to 3b



Fold here for finished edge

Center Back

Attach to 3a

#3b Back Cut 2

Grain Line



#4a
Ruffle
Cut 3 on fold

↓ Place on Fold ↓

#4b
Ruffle
Cut 3 on fold

Attach to 4a here

#2 Button Cover Cutting Guide

